

Connecting Worlds!

Hucke AG Group is one of the leading fashion companies in Germany and is highly focussed on international activities. The group is represented in over 30 countries of the world; more than 17000 fashion shops are customers to the group. Hucke AG is one of the few fashion companies, which offers a complete concept. Under one single roof Hucke AG designs and manufactures fashion for women, men and kids with emphasis on fashion in the middle-pricing segment.



Hucke AG focuses and invests in new technologies which – when coupled with traditional technologies – lead to exciting synergetic effects. Connecting these two worlds – that is the responsibility of tcACCESS.

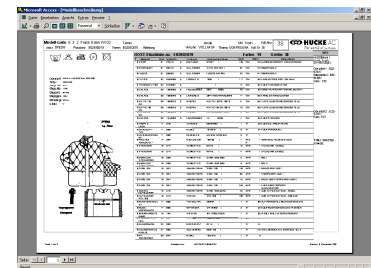
Heart of the central data processing of the Hucke AG is the IBM 9672-RB4 which runs with VM and VSE/ESA 2.3.2. with the operational data maintained in DATACOM from Computer Associates. Several factors caused Hucke AG to look to integrating Client/Server technology with the traditional mainframe based data processing. These included: continuous requirements for implementation and usage of new technologies, alternatives to the existing data processing infrastructure, and demands to reduce costs. The goal was to develop WINDOWS based applications using object oriented knowledge while still accessing the traditional data structures stored on the mainframe. Hucke AG already had made several attempts in this direction, but was not successful because of performance and throughput problems with connectors available for the DATACOM database.

application was handed over to the end-user department, which was using manual procedure to perform the same task.

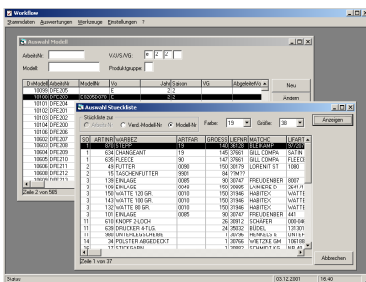
After a more than positive impression, the decision was made by Hucke AG to purchase tcACCESS.

The contact to B.O.S. led to a demonstration and trial installation of tcACCESS. When tcACCESS was installed, on that very day the DATACOM database was accessed from a MS-ACCESS application using the tcACCESS ODBC connectivity. During the trial period a Visual Basic application has been developed, which processes bill of material information stored in

„To ensure a smooth and easy implementation of tcACCESS, we developed a few REXX procedures which automatically generated the necessary tcACCESS table definitions for the DATACOM databases,“ says



Heinrich Hageböke, DATACOM administrator at Hucke AG. „In the meantime this is obsolete, because tcACCESS automatically reads the DATACOM dictionary to obtain all relevant information.“ In the first few months of production use of tcACCESS, additional applications were developed which use tcACCESS to directly access mainframe resources. „It's a lot of fun to work with tcACCESS,“ states Bernd Spechtmeyer, Application Programmer at Hucke AG and responsible for tcACCESS. „I personally do not have a mainframe background, but I can use my knowledge of object oriented programming to develop applications which transparently access mainframe data. ODBC is the key to success and my day-to-day business!“ Bernd Spechtmeyer recently developed an application that utilizes the production bill of material data, which resides on a mainframe DATACOM database and merges this data with graphical objects of the products stored on a MS SQL-Server database.



a DATACOM database and also allows updating the database. During the four-week trial period Hucke AG found various other areas where tcACCESS would be a perfect fit.

With the help of B.O.S., a Visual Basic application was developed, which directly accessed VSE POWER Queues and provided a selective download of multiple reports of the POWER PRINT Queue. The VB program uses tcACCESS to download the mainframe reports and convert them into MS-WORD format. The conversion is based upon the MCC (Machine Control Character), which is stored in position 1 of each print line. The

„We are currently planning to enhance that application and web-enable it,“ says Alfred Bartels, Manager Application Development of Hucke AG. „This will be easy to do, because tcACCESS will be used to connect the Web application and our VSE System.“



Contacts:
Bernd Spechtmeyer – Hucke AG
Tel: +49-5741-364-293
E-Mail: b.spechtmeyer@huckeag.de

Peter M. Horbach
B.O.S. Software Service und Vertrieb GmbH
Tel: +49-89-4619930
E-Mail: Peter.Horbach@bossoftware.de
www.bossoftware.de