

## The two passions

**For decades Classen-Papier is known for two passions. Classen-Papier offers the best quality papers in the market and provides a dedicated and excellent service. Competence and engagement is the base for the cooperation between customers, employees and subcontractors.**

**Hardly a material is as multipurpose as paper. It can be found everywhere. One cannot imagine every day's life without paper. Most people rarely think about different papers. Because paper is a fundamental part of our life, one may think of it as being trivial.**

**Classen-Papier is enthusiastic about paper! And the customer should profit from this enthusiasm.**



Classen-Papier was founded in 1919 and employs more than 700 people. 17 branch offices in Germany, Netherlands and Luxembourg guarantee the proximity to customers. The data processing of Classen-Papier is located in Essen-Kettwig.

Central hub of the data processing is an IBM 2003-215 MP. VM/ESA and VSE 2.6 are the operating systems. All production applications have been developed in-house. COBOL is the programming language and VSAM files host the corporate data.

Early in 2000 tcACCESS has been presented and demonstrated at Classen-Papier. "At this time we were looking for a solution which would enable us to automate all of the data-transfer between the mainframe and our NT-network," says Horst Bachmann, Chief Technology Officer at Classen-Papier. "It really was of importance to us, to use this automated data-transfer for our EDI-procedures with our suppliers. Of course, there were additional considerations. We also wanted to directly access our VSAM files from PC-applications. The presentation and the demonstration of tcACCESS convinced us and we arranged an installation with B.O.S."

The first attempts to walk with tcACCESS successfully happened right after the installation. Andre Bracha, Application developer, was the man of the first "tcACCESS-hour". "It really was exciting and interesting to see how simple it was to access our VSAM files directly from a PC VisualBasic-program. Whenever questions came up we could call the B.O.S. support-people. They always have been – and still are- very cooperative and competent. As I said, this hasn't changed as of today! "

In the 2nd year of the tcACCESS-chronology approximately 20 projects have been implemented with tcACCESS. Andre Bracha: "We met our goal. We have automated the data-transfers between the mainframe and various NT-applications. Most important to us is that all of these data-transfers are secure and transparent."

An abstract of the tcACCESS-applications at Classen-Papier:

- **Customer Information System**  
VSAM-Information will be selected by tcACCESS and relevant record-segments are transferred to a PC. From there the data will be sent to a remote server.
- **Controlling**  
tcACCESS extracts statistical information from VSAM-ESDS-files or reports from the VSE-POWER-Queue. The data will be automatically converted into a WORD-format.

- **Sales**  
tcACCESS extracts data from multiple, joined VSAM files. A VB program links this information to data from a MS SQL-Server database.

Andre Bracha: "We use more than 100 different Batches in the 20 projects developed with tcACCESS. All procedures consist of individual components, which are being used in all projects." All of these automated procedures create documentation and audit trails about the activities, which were performed during the execution run. Andre Bracha: "The components document all courses of events. This assures, that all data-transfers are transparent and understandable. As a side aspect, these audit trails have been extremely helpful in cases something went wrong." The procedures are being used in various applications. They will be either started automatically or a user initiates them. Bracha: "Let me give you an example. A host-job prepares data. The operator starts a tcACCESS batch by clicking on a desktop icon. The batch uses command-shell extensions from tcACCESS, i.e. dialogs. The user will be prompted for the data format. The dialog then asks the user how he expects the data, as a ZIP-file or an E-Mail attachment. May be he simply wants to FTP the received data. He can provide this information as part of the dialog boxes. From the users point, the batch actually runs like a Windows application."

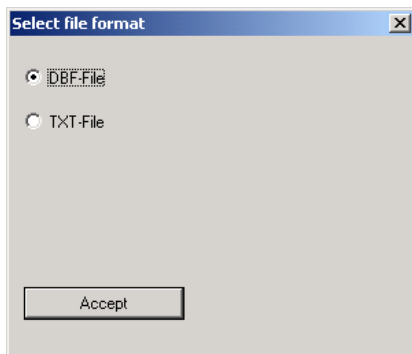
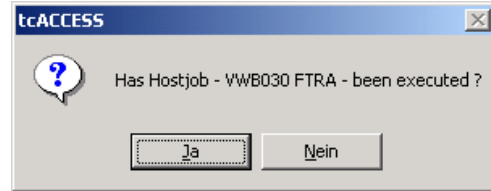
Another important application area for tcACCESS is the order processing with EDI. Multiple, tcACCESS based procedures are in use. A scheduler starts the procedures. Host data will be processed and PC applications access the host files using the tcACCESS ODBC-component. tcACCESS also allows the integration of existing CICS-programs. Finally the data will be stored in a special server directory of the EDI-software. The EDI-software takes the data and sends it to the supplier. If that step is completed, a CICS-program will be started via the tcACCESS ODBC-component. The CICS-program is notified and performs the necessary updates against the host VSAM-files.

Horst Bachmann: "By using tcACCESS our day-to-day data-processing has become more transparent. B.O.S., the vendor of tcACCESS, works very close with the customers. We are extremely pleased by this dedicated support. Obviously a passion which is common to B.O.S. and Classen-Papier."

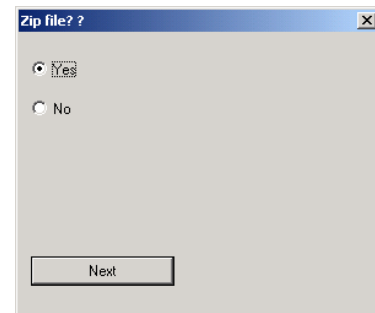
Peter M. Horbach  
B.O.S. Software Service und Vertrieb GmbH  
Tel: 089-4619930  
E-Mail: Peter.Horbach@bossoftware.de  
www.bossoftware.de

### Example of a tcACCESS process:

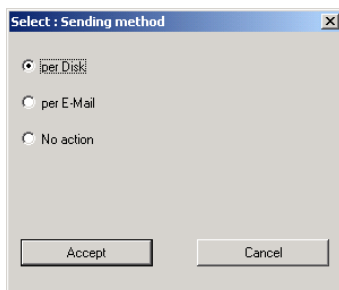
The operating personnel initiate the procedure by starting a tcACCESS-batch. All dialog boxes are part of the tcACCESS command-shell extension. The operator confirms that a particular host-job has been executed.



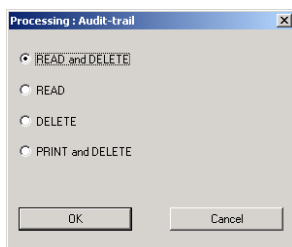
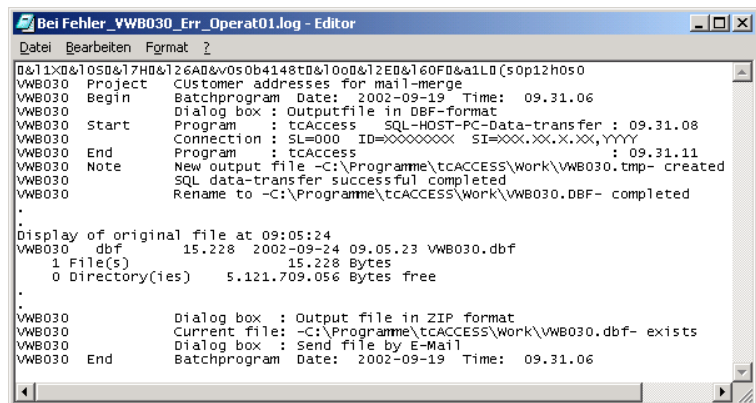
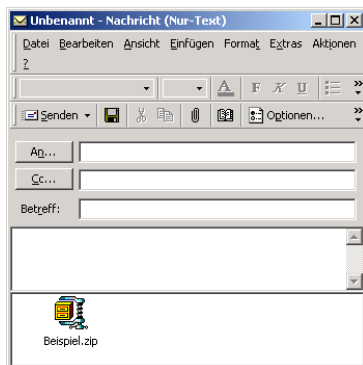
The tcACCESS-Batch processes the files created by the host-job. The Batch prompts for the output format: DBF or TXT. In addition the data can be directly written into any ODBC data-source.



The host-data is now available as a DBF file. Next, the Batch asks the operator whether he would like to have the file zipped.



The last dialog step prompts how the file should be sent. If E-Mail has been selected, the E-Mail client will be started and the file will be used as an attachment. All steps of the procedure will be documented. Another dialog box asks how to deal with the audit-trail: Read, Print or Delete.



Example of the audit-trail.